

Data sheet: Yonos MAXO 25/0,5-7 PN10

Hydraulic data

Maximum operating pressure P_N	10 bar
Head max H_{max}	7.0 m
Flow max Q_{max}	7.2 m ³ /h
Minimum suction head at 50 °C m	3.0 m
Minimum suction head at 95 °C m	10.0 m
Minimum suction head at 110 °C	16.0 m
Min. fluid temperature T_{min}	-20 °C
Max. fluid temperature T_{max}	110 °C
Min. ambient temperature T_{min}	-20 °C
Max. ambient temperature T_{max}	40 °C

Materials

Pump housing	Cast iron
Impeller	PPE/PS-GF30
Shaft	Stainless steel
Bearing	Carbon-graphite

Information for order placements

Brand	Wilo
Product description	Yonos MAXO 25/0,5-7 PN10
EAN number	4048482235868
Article number	2120639
Net weight, approx. m	5 kg
Gross weight, approx. m	5.8 kg
Length with packaging	270 mm
Height with packaging	205 mm
Width with packaging	242 mm
Packaging property	Transport packaging
Packaging type	Cardboard box
Minimum order quantity	1

Motor data

Energy efficiency index (EEI)	0.20
Mains connection	1~230 V ±10%, 50/60 Hz
Min current I_{min}	0.08 A
Max current I_{max}	1.00 A
Min. speed n_{min}	1000 1/min
Max. speed n_{max}	3700 1/min
Power consumption $P_{1 min}$	5.0 W
Power consumption $P_{1 max}$	120.0 W
Emitted interference	EN 61800-3;2004+A1;2012 /residential area (C1)
Interference resistance	EN 61800-3;2004+A1;2012 /industrial environment (C2)
Threaded cable connection	2 x M20x1.5
Insulation class	F
Protection class	IPX4D

Installation dimensions

Pipe connection on the pressure side DN_d	G 1½
Pipe connection on the suction side DN_s	G 1½
Port-to-port length L_0	180 mm

Tender text: Yonos MAXO 25/0,5-7 PN10

High efficiency pump Wilo-Yonos MAXO

electronically controlled,

Glandless circulator, synchronous motor according to ECM technology and integrated power control for continuous differential pressure control. Can be used for all heating, ventilation and air-conditioning applications.

Standard-equipped with:

- Preselectable control modes for optimum load adjustment: Δp -c (differential pressure constant), Δp -v (differential pressure variable)
- 3 speed stages ($n = \text{constant}$)
- LED for setting the setpoint and displaying error messages
- Electrical connection with the Wilo plug
- Fault lamp and contact for collective fault signal

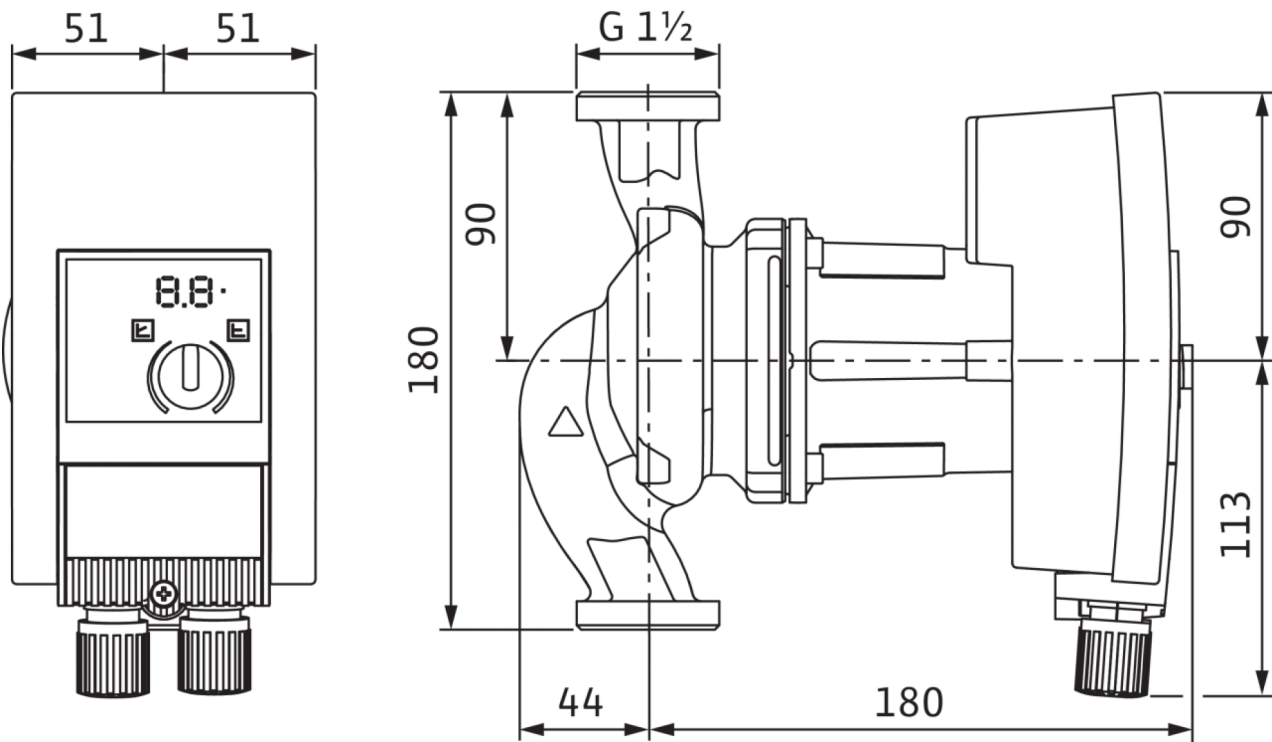
For flange-end pumps - flange versions:

- Standard version for pumps DN 32 to DN 65: PN 6/10 combination flange (PN 16 flange according to EN 1092-2) for PN 6 and PN 16 counter flanges
- Standard version for DN 80/DN 100 pumps: PN 6 flange (designed for PN 16 according to EN 1092-2) for PN 6 counter flange

Operating data		Motor data	
Fluid media	Water	Energy efficiency index (EEI)	0.20
Fluid temperature T	-20 °C	Emitted interference	EN 61800-3;2004+A1;2012 /residential area (C1)
Ambient temperature T	-20 °C	Interference resistance	EN 61800-3;2004+A1;2012 /industrial environment (C2)
Maximum operating pressure P_N	10 bar	Mains connection	1~230 V, 50/60 Hz
Minimum suction head at 50 °C m	3.0 m	Power consumption $P_{1 \max}$	120.0 W
Minimum suction head at 95 °C m	10.0 m	Min. speed n_{\min}	1000 1/min
Minimum suction head at 110 °C	16.0 m	Max. speed n_{\max}	3700 1/min
		Protection class motor	IPX4D
		Threaded cable connection	2 x M20x1.5
Materials		Installation dimensions	
Pump housing	Cast iron	Pipe connection on the suction side D_Ns	G 1½
Impeller	PPE/PS-GF30	Pipe connection on the pressure side D_Nd	G 1½
Shaft	Stainless steel	Port-to-port length L_0	180 mm
Bearing	Carbon-graphite		
Information for order placements			
Brand	Wilo		
Product description	Yonos MAXO 25/0,5-7 PN10		
Net weight, approx. m	5 kg		
Article number	2120639		

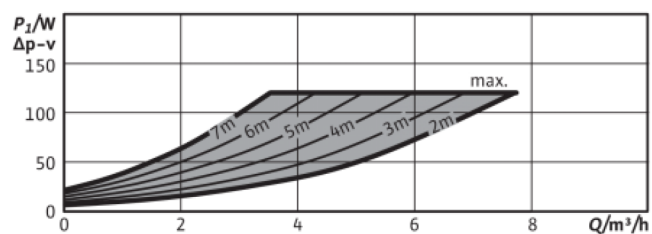
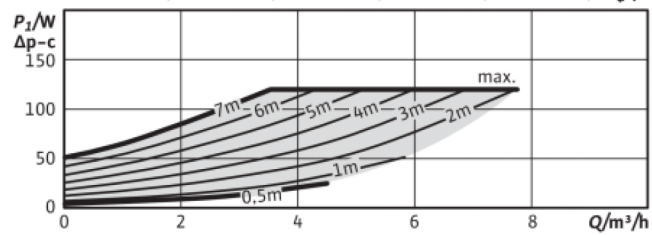
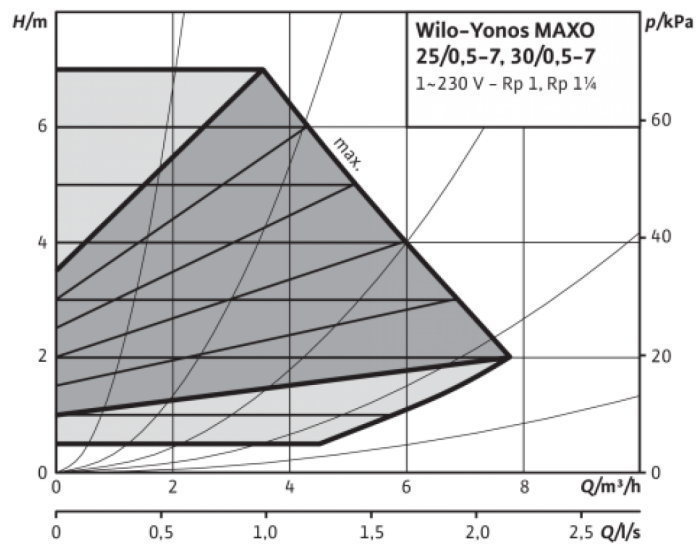
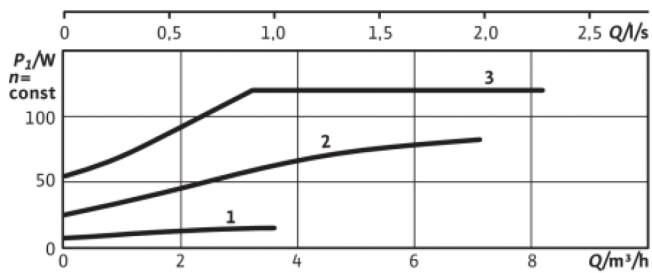
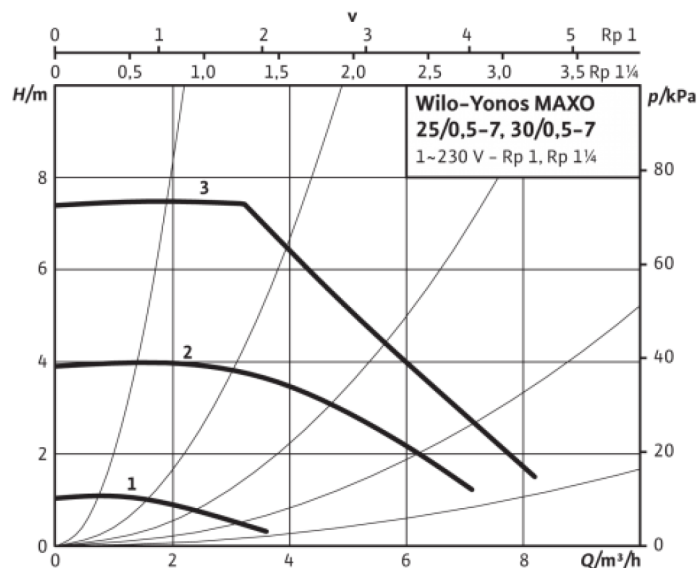
Dimensions and dimensions drawings: Yonos MAXO 25/0,5-7 PN10

Yonos MAXO 25/0,5-7



Pump curves: Yonos MAXO 25/0,5-7 PN10

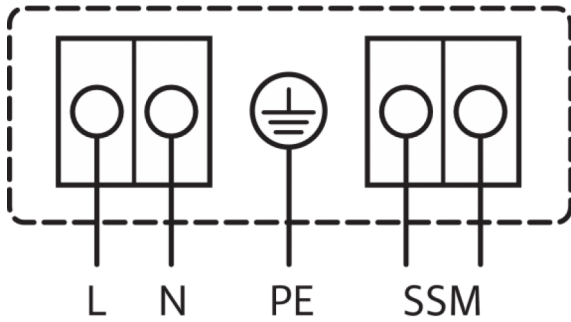
Yonos MAXO 25/0,5-7



Wiring diagram: Yonos MAXO 25/0,5-7 PN10

1~230V, 50/60 Hz

1~ 230 V, 50/60 Hz

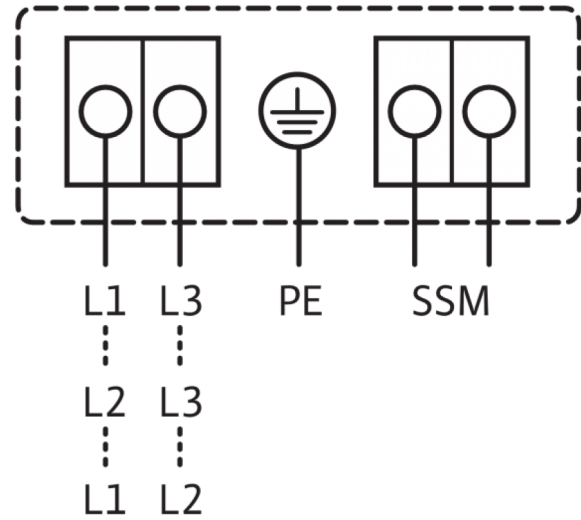


SSM:

Standard: 1~230 V, 50/60 Hz

Option: 3~230 V, 50/60 Hz

3~230 V, 50/60 Hz



Collective fault signal

(NC contact in accordance with VDI 3814, load capacity 1 A, 250 V ~)

Ordering information: Yonos MAXO 25/0,5-7 PN10

Brand	Wilo
Product description	Yonos MAXO 25/0,5-7 PN10
EAN number	4048482235868
Article number	2120639
Gross weight, approx. <i>m</i>	5.8 kg
Net weight, approx. <i>m</i>	5 kg
Overall length <i>L</i>	203.0 mm
Height without packaging <i>H</i>	224 mm
Colour	green/black
Packaging property	Transport packaging
Packaging type	Cardboard box
Number per layer	14
Width without packaging <i>B</i>	105.0 mm
Minimum order quantity	1
Pieces per pallet	70
Date of sales availability	2015-06-01
Date of introduction	2015-06-01